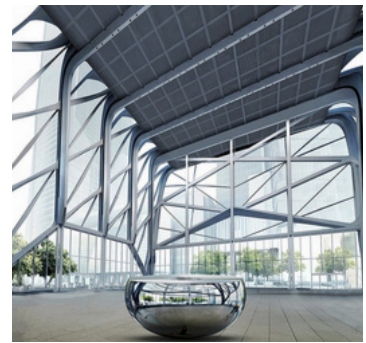


# COLIN KERRIGAN

*Artist, Educator, Institution Builder - Presented By INTENT GALLERY*



Colin Kerrigan is a British sculptor whose career unites a distinguished studio practice with significant international leadership in art and design education. Working across the United Kingdom, the United States, Europe, and Asia, his practice reflects a sustained exploration of form, space, and human experience.

Kerrigan studied Fine Art (Sculpture) at Birmingham College of Art and Design before working as assistant to Sir Anthony Caro, an experience that shaped his understanding of modernist sculptural language and large-scale fabrication. He later completed a Master of Arts in Sculpture at Bennington College as a Rotary International Fellow. He is an elected Associate of the Royal Society of Sculptors (MRSS), a Fellow of the Royal Society of Arts (FRSA), and an Associate Member of the Royal Birmingham Society of Artists (RBSA).

His sculptural work examines time, transition, and the interplay between interior and exterior space. Whether realised as intimate pieces or large-scale public commissions, his works activate the space between object and viewer, transforming it into a site of reflection and relational experience. Rooted in steel, bronze, and ceramic, his practice now integrates advanced casting processes, CAD design, 3D printing, and CNC fabrication combining traditional craftsmanship with contemporary technologies.

Alongside his artistic career, Kerrigan held senior roles at University of the Arts London and Central Saint Martins, leading international development initiatives and establishing global partnerships. He also founded the International School of Creative Arts, creating pathways for international students to enter leading art and design universities. In 2020, he returned to sustained studio practice with renewed focus, developing a mature body of work that reaffirms sculpture as a catalyst for connection and shared presence.

*Colin Kerrigan is presented by Intent Gallery, Dubai, with the exhibition *Sculpture and the Space Between*, which opened on 7th February, marking a significant chapter in his continued artistic development.*

# C REATIVITY M ATTERS

*By Colin Kerrigan*

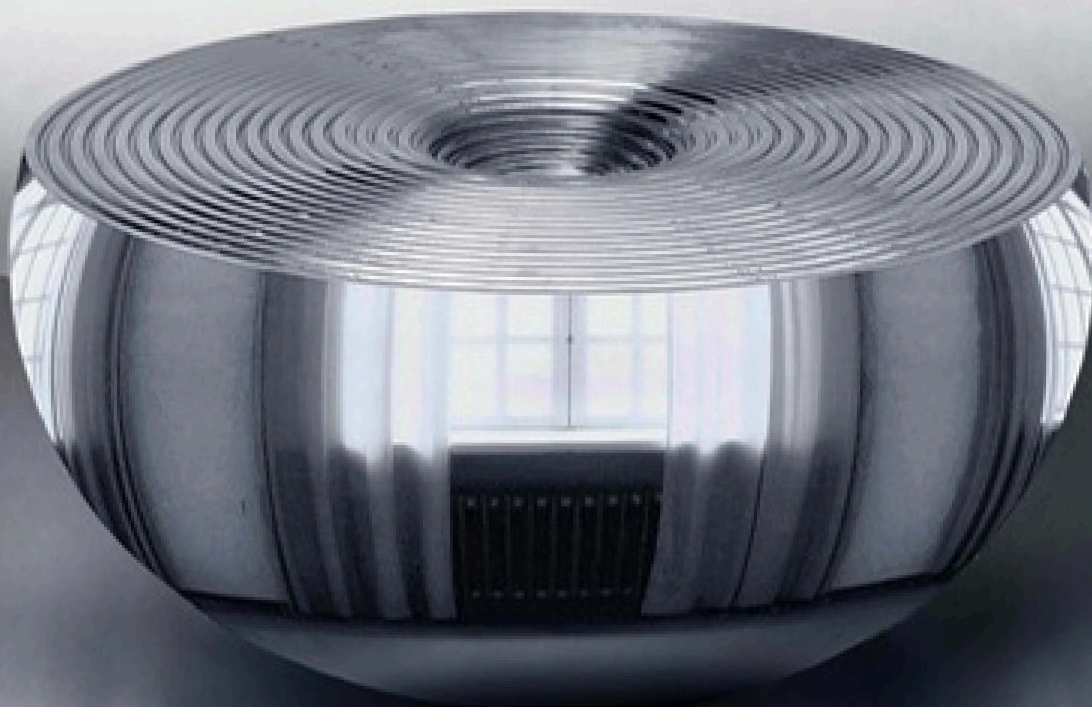
Creativity is an essential part of life. The ability to move beyond what we already know and seek something new has enabled society to grow and evolve. Creativity is not only an artistic process; it is a way of thinking that extends across all areas of society. We see it not only in the arts, but equally in the sciences and mathematics, where new ideas and discoveries are developed through curiosity and experimentation. Creative thinkers do not simply conform to traditional ways of thinking. They challenge what already exists, seeking new perspectives in order to innovate and find solutions. —

Like artists, scientists explore, experiment, test and refine ideas in order to better understand the world around them. Both are driven by the same fundamental process questioning how things are and imagining how they could be.

Creativity enables people to work in both linear and non-linear ways, helping them to see patterns, connections and possibilities. This mindset allows individuals to adapt, take risks and respond to new challenges. As a result, creativity plays an important role across many fields, from technology and science to business, finance and the humanities.

On a personal level, creativity opens new areas within ourselves. It encourages observation, imagination and the discovery of hidden talents and potential. Creative participation also brings people together, building confidence, resilience and collaboration.

Ultimately, creativity allows us to ask what if? and then work towards turning that idea into reality. It is through creativity that individuals and societies continue to grow, adapt and transform.



*"Still Waters Run Deep" by Colin Kerrigan*

# PAST TIMES

By Colin Kerrigan

Past Times explores time, growth and ambition through a series of concentric circles radiating from a central void. The void suggests both origins and the unknown future, while the expanding circles reflect development and the ripple effects of past actions.

Through the interplay of form and emptiness, the work reflects on how memory and experience shape present choices and future possibilities, inviting contemplation of life's continuous movement from past to future.



# POISED

By Colin Kerrigan

Poised unfolds as a tightly coiled spiral, balanced between stillness and motion. Each segment suggests latent energy, creating a quiet tension that captures the moment just before release.

Through this balance of control and potential, the sculpture explores themes of equilibrium and transformation. The spiral becomes a timeless metaphor for continuity, contained energy and the delicate balance between stillness and change.



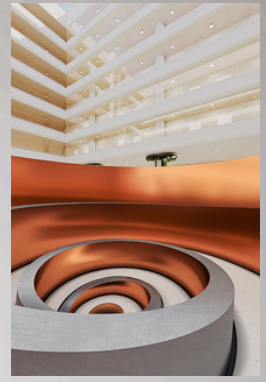
# STILL WATERS RUN DEEP

By Colin Kerrigan

Still Waters Run Deep explores the tension between outward calm and hidden depth. Its vessel-like form, marked by concentric circles, draws the eye toward a central void running through the sculpture.

The rippling surface suggests subtle movement, while the void evokes introspection. Together they reflect the contrast between appearance and essence, revealing the quiet energy beneath stillness.





*“City Dreams” by Colin Kerrigan*

*Presented by INTENT GALLERY*

City Dreams is a sculptural work inspired by Dubai’s past and present, reflecting the dialogue between tradition and innovation that defines the city. Constructed from copper and stainless steel, the sculpture symbolises both heritage and modernity. Its spiralling forms suggest movement and transformation, while openings within the structure allow light and wind to pass through, creating a quiet moment of reflection. The work invites viewers to pause and reflect on the evolving spirit of Dubai.